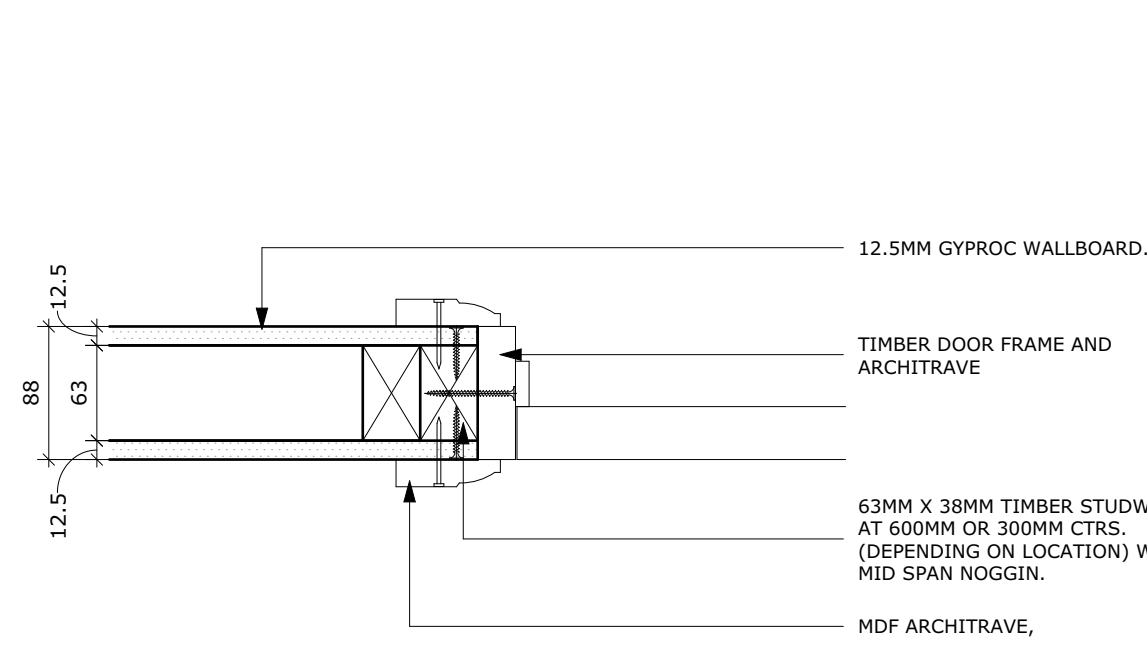
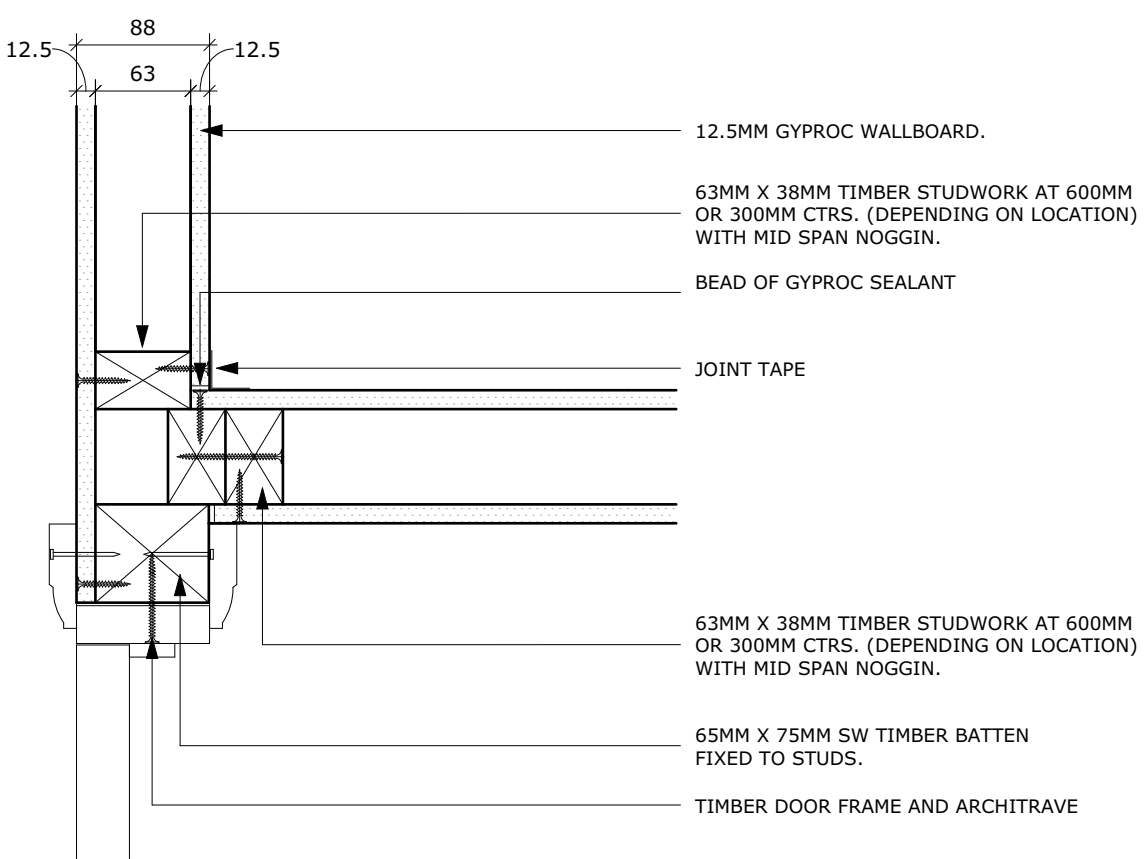


Typical Details - Sheet 1



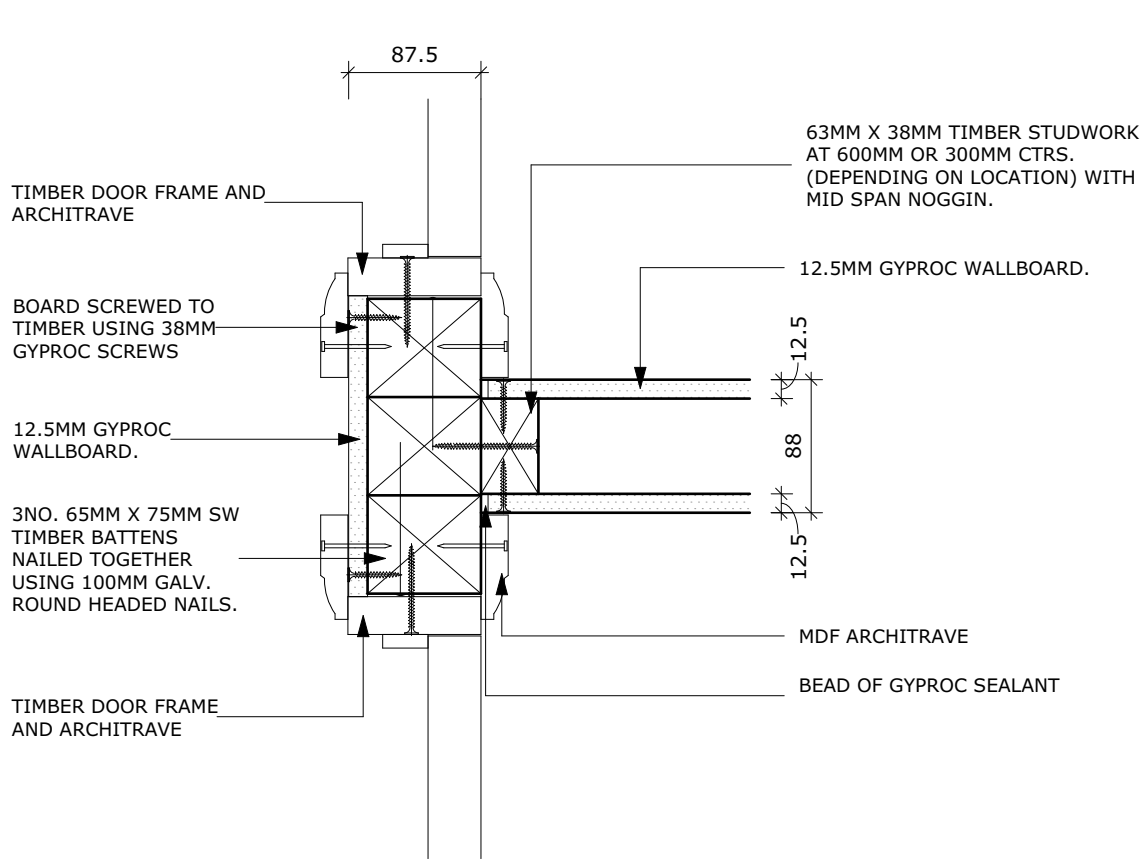
Typical Door Jamb 1 Detail

Scale: 1:5



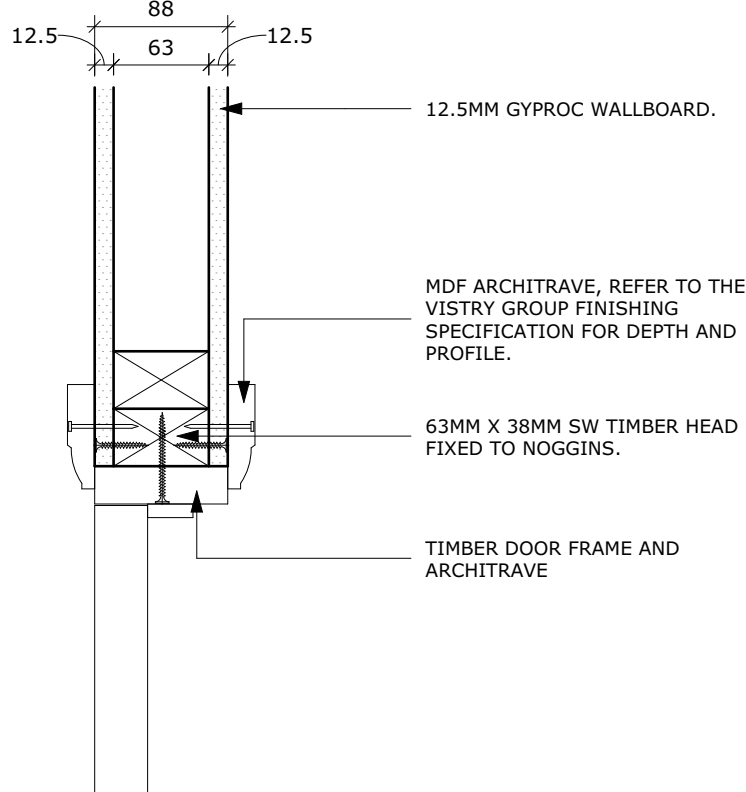
Typical Door Jamb Detail With Batten

Scale: 1:5

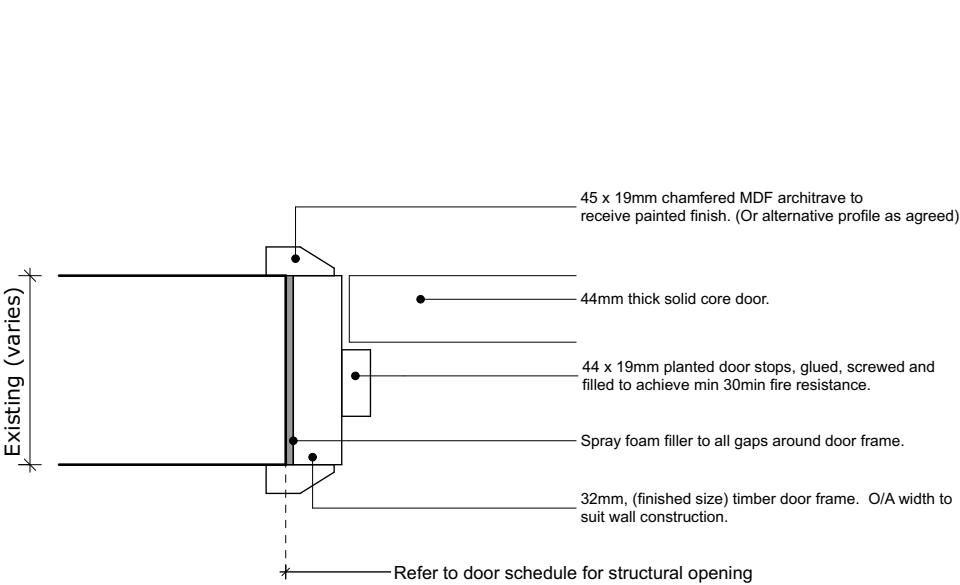


Typical Door Jamb Detail With Battens

Scale: 1:5

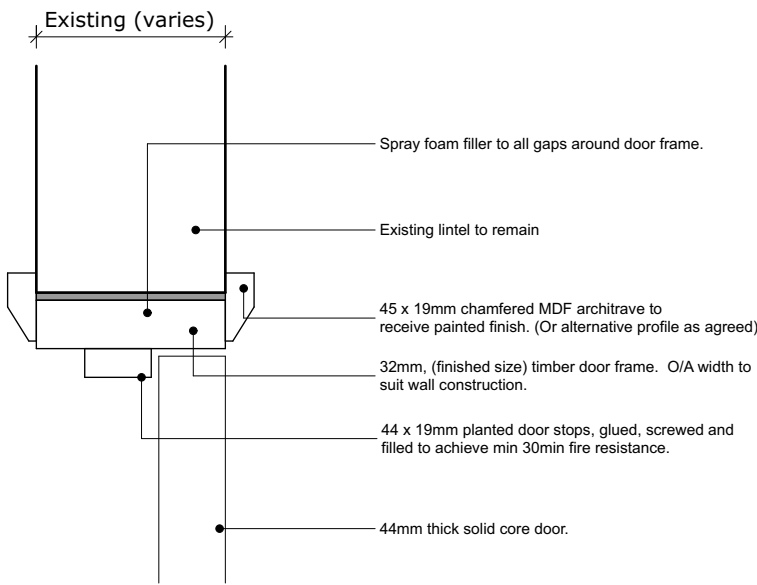


Typical Door Head 1 Detail



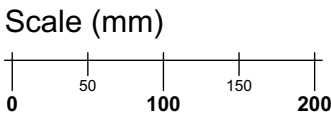
Typical Existing Door Jamb Detail

Scale: 1:5



Typical Existing Door Head Detail

Scale: 1:5



Disclaimer: brp architects ltd. accept no responsibility for work not undertaken fully in accordance with the contents of this drawing and related specifications. This document and its design content is copyright protected & it shall be read in conjunction with all other associated project information including models, specifications, schedules and related consultants documents. Do not scale from documents. All scales noted correct at original paper size. All dimensions to be checked on site. Immediately report any discrepancies, errors or omissions on this document to the originator. If in doubt ask.

Source File
A77-6 26 Action Homeless Leicester 20231017 Onwards.pln

Rev	Date	Drawn	Note
-----	------	-------	------



1 Millers Yard
Roman Way
Market Harborough
Leicestershire
LE16 7PW

T: 01858 464986
brp-architects.com

Client Action Homeless			
Project Title Proposed Alterations Mayfield House, St James Terrace / Mayfield Road, Leicester			
Drawing Title Typical Internal Door Jamb & Head Details			
Drawing Status Tender			
Scale(s) 1:5		Original Paper Size: A1	
Drawn By KRU	Checked By (if file copy only)	Date 21.05.2024	
Document Reference: A77-BRP-00-XX-DR-A-5002-T01			